



PASTURE, RANGELAND, FORAGE (PRF)

ProAg Pasture, Rangeland, Forage (PRF) insurance offers protection against forage loss due to the lack of precipitation on acres grown with the intended use of grazing or haying.

This program helps farmers and ranchers cover their increased costs for feed, destocking, depopulating or other actions which can be incurred during dry periods. The PRF program utilizes a rainfall index to determine precipitation for coverage purposes and does not measure production or loss of products themselves.



FEED



DESTOCKING



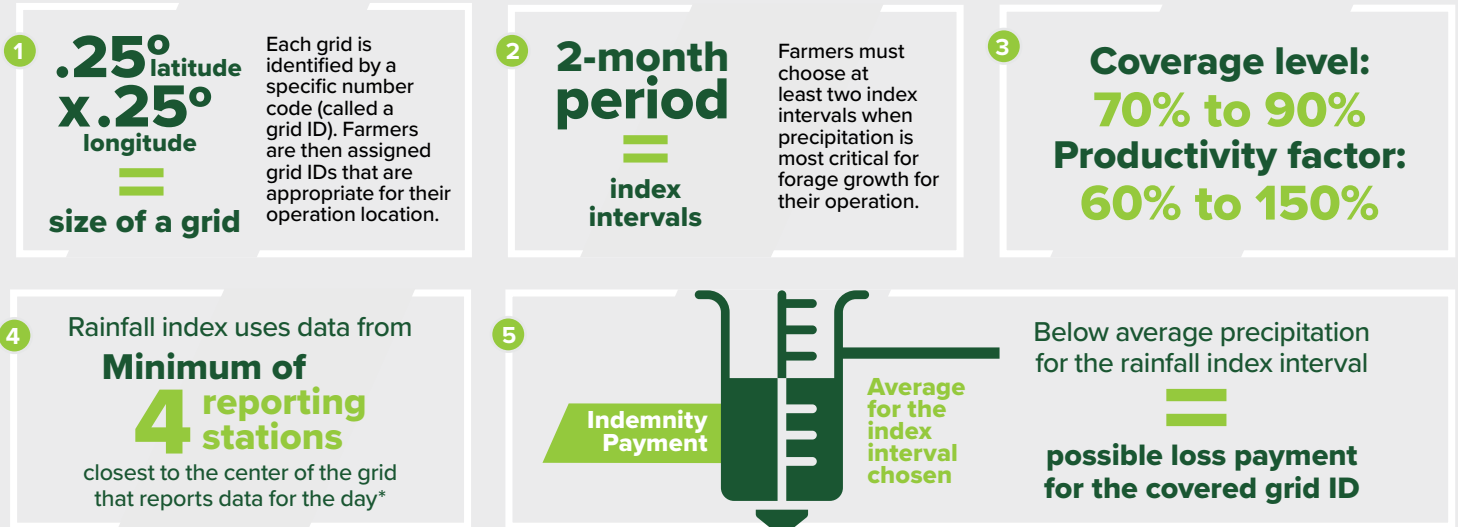
DEPOPULATING

AVAILABILITY

PRF is available in the **48 contiguous states** with the exception of a few grids that cross international borders.



HOW DOES THIS RAINFALL INDEX POLICY WORK?



*Data sourced through the National Oceanic and Atmospheric Administration Climate Prediction Center (NOAA CPC)

PRF INDEMNITY EXAMPLE

In this example, assume the final grid index is 50, the county base value (CBV) is \$10.20, the coverage level is 90%, the protection factor is 120%, and the trigger grid is 90. The insured has a 100% share.

| | |
|--|---|
| CBV x coverage level x protection factor = protection | $\$10.20$ $\times 90\%$ $\times 120\%$ = \$11.02 per acre |
| (Trigger grid – final grid) ÷ trigger grid = factor | $(90 - 50)$ $\div 90$ = .444 |
| Factor x protection x share = indemnity | $.444$ $\times \$11.02 \text{ per acre}$ $\times 100\%$ = \$4.89 per acre |

4 CONSIDERATIONS TO MAXIMIZE YOUR PRF COVERAGE

1

PRF does not measure the actual crop production of any farmer or any of the actual crop production within an area. Indemnity payments are earned only when the Final Grid Index is less than the Trigger Grid Index.

2

PRF uses the long-term, historical, gridded precipitation data for the grid ID and index interval. Farmers should carefully review the historical experience of each grid ID and index interval.

3

Selection of the appropriate index interval(s) is critical. Farmers must select the index intervals that include the time period when precipitation is needed to produce grazing and/or haying forage under normal conditions.

4

The gridded precipitation data is an interpolated value for the entire grid and cannot be traced to a single point or reporting station. The precipitation received by a farmer at a specific location may not match the Final Grid Index.



Access your policy within our easy-to-use myProAg® policyholder portal.
Direct deposit / Online bill pay / Notice of loss entry / Claim status tracker / Weather event notifications

▶ Sign up at my.proag.com

Visit ProAg.com/PRF or give us a call at **(800) 366-2767** to protect your operation.

GROW WITH CONFIDENCE®



Not all coverages or products may be available in all jurisdictions. The description of coverage in these pages is for informational purposes only. Actual coverages will vary based on the terms and conditions of the policy issued. The information described herein does not amend, or otherwise affect, the terms and conditions of any insurance policy issued by ProAg or any of its subsidiaries.

Pro Ag Management, Inc. (collectively with its corporate affiliates, "ProAg®") is a managing general agency representing several risk bearing insurance companies, including Producers Agriculture Insurance Company and U.S. Specialty Insurance Company, and doing business as Pro Ag Insurance Services, Inc. in California (CA Entity License #0F34212). The description of coverage in these pages is for informational purposes only. The information described herein does not amend, or otherwise affect, the terms and conditions of any insurance policy issued through ProAg.

ProAg is an equal opportunity provider. In accordance with Federal law and U.S. Department of Agriculture (USDA) civil rights regulations and policies, the USDA, its Agencies, offices and employees and institutions participating in or administering USDA programs are prohibited from discriminating on the basis of race, color, national origin, religion, sex, gender identity (including gender expression), sexual orientation, disability, age, marital status, family/parental status, income derived from a public assistance program, political beliefs, or reprisal or retaliation for prior civil rights activity, in any program or activity conducted or funded by USDA (not all bases apply to all programs).

ProAg is an equal opportunity provider and employer. A member of the Tokio Marine HCC group of companies. ©2023 ProAg. All rights reserved.